

Zhengzhou Sinodu Machinery Technology Co Ltd



CONTENT

01	COMPANY PROFILE
02-11	STOCK PREPARATION
11-13	PULP&PAPER MAKING GENERAL PARTS
13-16	PAPER MACHINE
17-25	PAPER MAKING MACHINE SPARE PARTS
26-32	FINISHED PAPER CONVERTING& PROCESSING MACHINE
33	CERTIFICATE, SHIPMENT AND CUSTOMERS

STOCK PREPARATION EQUIPMENT

A.Pulping Equipment

1.Unpacker/ Bale breaker/Bulk screen

Purpose:

Unpacker or called bale breaker, is widely used in waste paper disposal system of pulp and paper industry.

Structural features:

- Clear majority of impurities from source to avoid them entering into pulping system, so as to improve quality of pulp.
- Loosing waste paper bale to shorten re-pulping soaking period, and improve re-pulping efficiency, saving 10-20% energy.
- Frequency control and speed regulation to adapt to demand of different output.
- Spray dust removal device can effectively clear dust from waste paper to clean environment.



Technical parameters

Model	ALM3.0	ALM3.25	ALM3.5	ALM3.75
Drum diameter (mm)	Φ3000	Φ3250	Φ3500	Φ3750
Capacity (tpd)	300-450	400-600	500-800	650-1000
Motor power (kw)	37	37	45	55
Sizes (mm)	1000×1200×1000			
Moisture (%)	<15			

The capacity may be different according to different pulp variety and consistency. So the capacity in the above chart is only used for choosing the model.

2.Pulper/ Hydrapulper

Purpose:

It is applicable to OCC or commodity waste paper intermittent or continuous breaking. Heavy impurities will be discharged from separate waste sedimentation tank to avoid equipment being damaged by heavy metal, and to discharge plastic.

Structural features:

New Fox rotor can strengthen hydraulic action, and improve efficiency of breaking fiber. Adoption of D-type slot structure changes vortex generated from traditional pulper, increases turbulence of pulp flow in pulper, paper bundle will quickly immerse below liquid level, so as to improve production capacity of pulper by updating movement routines of waste paper in pulper, contributing to shortening breaking period, reducing energy consumption, and enhancing productivity of unit volume.

Specification: 15m³~100m³

Disposal capacity: 80~1000TPD



Model	Capacity (tpd)	Effective volume(m3)	Consistency(%)	Motor power (kw)
ALM15	100-150	15	3-5	165
ALM20	150-200	20	3-5	185
ALM25	200-250	25	3-5	220
ALM30	250-300	30	3-5	280
ALM35	300-350	35	3-5	315
ALM40	350-400	40	3-5	355
ALM45	400-450	45	3-5	400
ALM50	450-500	50	3-5	450
ALM60	500-550	60	3-5	560
ALM70	600-700	70	3-5	630
ALM80	700-800	80	3-5	710
ALM90	800-900	90	3-5	900
ALM100	900-1100	100	3-5	1120

The capacity may be different according to different pulp variety and consistency. So the capacity in the above chart is only used for choosing the model.

3. Drum screen/ Trommel screen



4. Impurity separating machine/ Impurity separator

Purpose:

Impurity separator combines the function of paper defibering and impurities separating. It's equipped with a pulper (for high or low consistency, continuously or batch-wise), impurity separator is used for separating the light and heavy impurities, and defibering the stock from the hydropulper.



Main technical data:

Model	ALM1	ALM2	ALM3
Nominal volume (m ³)	1.2	3	5
Treatment density (%)	3-5		
Processing power (t/d)	35-45	60-80	100-130
Motor power (kw)	45-55	75	160
Out size (mm)	3350*2350*1565	3760*1750*2700	4650*2000*3200

The capacity may be different according to different pulp variety and concentration.
So the capacity in the above chart is only used for choosing the model.

B.Purification equipment

5.High/ middle consistency cleaner

Purpose:

It is used to remove heavy impurities contained in the stock.

Structural features:

- Feeding pipe with a certain inclination angle will form a strong force of vortex flow to separate the heavy impurities effectively.
- Cone body is adopted alumina wear resistant ceramic which ensures long service time.
- Two-cone structure reduce fiber loss while raise heavy impurity separation efficiency.
- Controlled by PLC automatic system, economize on manpower and materials.

Main technical data:

- Capacity: 70-500t/d
- Throughput: 900-12000m³/min
- Consistency: 3-5% high consistency cleaner; 2-3% middle consistency cleaner



6.Low consistency cleaner

Purpose:

It is used for pulp cleaning before paper machine

Structural features:

- Special abrasive resistance material ensures durable
- Adopted advanced centrifugal clarification technology to make sure high accepts cleanness with high efficiency
- Closed reject discharging system result in cleaner operation environment
- Easily to assembly and disassembly; change with fission construction.
- Compact conformation, cover small floor area

Main technical data:

- Capacity: 15-400t/d
- Throughput: 600-800m³/min
- Consistency: 0.4-1.2%



Cleaner cones

Design features:

- Different kinds
- Best effect
- High pulp remained rate
- Many choice of flow rate
- 304/316L Stainless steel parts
- Wear resistance, corrosion resistance, and impact resistance
- Long service time
- Ideal structure
- Easy to disassemble



C.Screening equipment

7.Single effect fiber separator/ Turbo Screen

Structural features:

- Three fundamental functions: secondary defibering, separating light impurities, removing heavy and coarse impurities.
- It is possible to use the poor waste paper and reduce the treatment of the raw material with the help of this machine.
- It can increase the production capability of existing hydrapulper and reduce the specific energy consumption by about 40%-60%.
- It can help to obtain high quality stock, reduce fiber loss and increase screening efficiency. The production capability can be 2-2.5 times of the traditional one.



Main technical data:

Model	AMC500	AMC700	AMC900		AMC1100	EST1280	AMC1420
Capacity (t/d)	83	100	160	230	300	360	420
Motor power (kw)	30	45	55	75	110	132	160
Processing capacity (%)	3.5-4.5						

The capacity may be different according to different pulp variety and concentration.
So the capacity in the above chart is only used for choosing the model.

8.Pressure screen

There are several kinds of pressure screens: up-flow Pressure Screen, Fiber fractionating screen, Inflow pressure screen, Outflow pressure screen, drum type coarse screen

Purpose:

The pressure screens are used for various waste paper pulp of coarse screening, separate long and short fiber in stock, or screening equipment before paper machine or fine screening in pulp production system, during all kinds of stock and different screening processes.

Design Features:

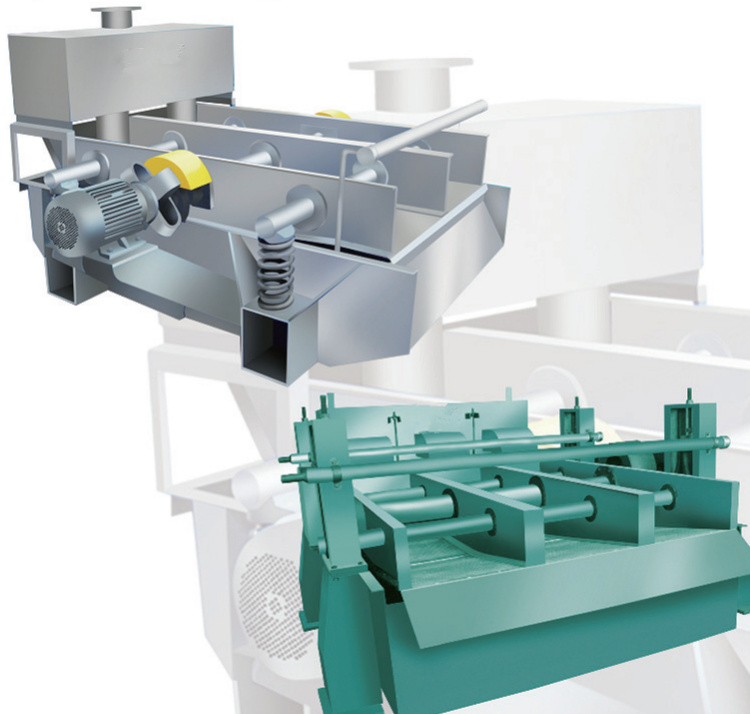
- Adopted the new high efficiency and energy saving screen rotor developed based on the fluid dynamics, it has the characteristics of high performance, big let flow processing capability, save 30%-60% of the power consumption and improve the efficiency of screening.
- With special designed high flow structure, obtain higher producing capability, prolong the service life of the consumables.
- Good adaptability with high production capability.
- High production efficiency with high flow speed
- High removal of the adhesive materials
- Lower power consumption; simple structure and easy maintenance



Various kinds of wedge wire screen basket, drilled hole type screen basket



9.Vibrating screen



Purpose:

Vibration frame flat screen is widely used for coarse screening chemical pulp, semi-chemical pulp, machinery pulp, thermo mechanical pulp, and waste paper pulp, etc, as well as fiber recovery from tailings and scruff pulp by pressure screen and separator.

Structural features:

- Adoption of special rubber for damping · device makes screen frame vibration stable.
- It enjoys features of both spring-loaded type and sling type structures.
- Special gas seal chamber screen board contributes to powerful self-cleaning capacity.

D.Washing and thickening equipment

10.High speed washer



Purpose:

It is used for washing and thickening in waste paper pulp processing.

Structural features:

- Pressure type gunting, pulp thick and well-distributed.
- High speed (900m/min), twinver compress, pulp dewatering fast, high rate ash removal.
- Equipped automatic correction device, adopted electromagnetic motor speed control, easy operation and working safety.

11.Cylinder thickener



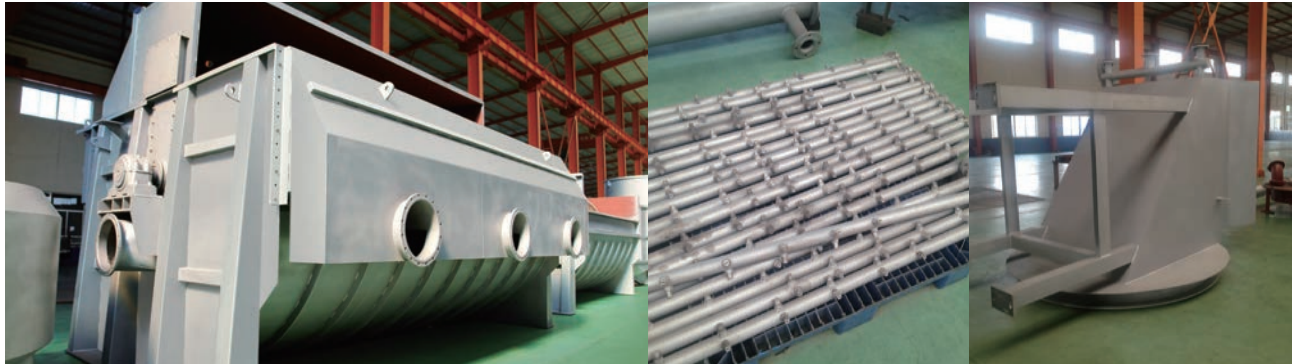
Purpose:

It is used for washing and thickening low consistency pulp.

Structural features:

- Simple structure, safe in operation.
- It is easy to control the outlet consistency and white water consistency.
- High bulk pulp layer, strong tiny impurities penetrability and good washing effect.

12.Gravity disc thickener



Model	AMC2510	AMC2512	AMC2514	AMC2516	AMC3510	AMC3512	AMC3514	AMC3516	AMC3518
Diameter of disc (mm)	2500	2500	2500	2500	3500	3500	3500	3500	3500
Number of disc (n)	10	12	14	16	10	12	14	16	18
Nominal area (m ²)	75	90	105	120	150	180	210	240	270
Inlet consistency (%)	0.8-1.2								
Outlet consistency (%)	3.5-4.5								
Capacity (t/m ² .d)	ONP	0.9-1.2							
	OCC	1.5-2.4							
Motor power (kw)	11		15		18.5	22		30	

The capacity may be different according to different pulp variety and concentration.

So the capacity in the above chart is only used for choosing the model.

E.De-inking equipment

13.Ellipse flotation de-inker



Purpose:

It is used for removing the dust and ink particles in the waste paper pulp, so as to get high quality paper pulp.

Design features:

- Self-priming can generate turbulence in different degree and bubbles in different size, more beneficial to remove ink particles and dust.
- Wide range ink separation, less fiber loss
- All floatation cells use one liquid level control circuit, easy to operate.
- Large throughput, small floor space
- Can be lay flat or stacked up

Main technical data:

Model	ALM1	ALM2
Specifications (mm)	3.8	3.8
Inlet consistency (%)	0.9-1.2	
Inlet pressure (mpa)	0.10	
Operational pressure difference (mpa)	0.09-0.10	
Capacity (t/d)	Single part length:1m	65-85
	Single part length:2m	130-170
	Single part length:3m	195-255
	Single part length:4m	260-340
	Single part length:5m	320-400
		400-500

The capacity may be different according to different pulp variety and concentration.
So the capacity in the above chart is only used for choosing the model.

F.Beating equipment

14.DD Series Double Disc Refiner



Purpose:

It is available for continuous beating of chemical wood pulp, mechanical pulp and waste paper pulp.

Design features:

It is manufactured with license of Metso, Finland.



The equipment is furnished with automatic control system and can beat with constant power and constant energy consumption. The beating effect is stable.

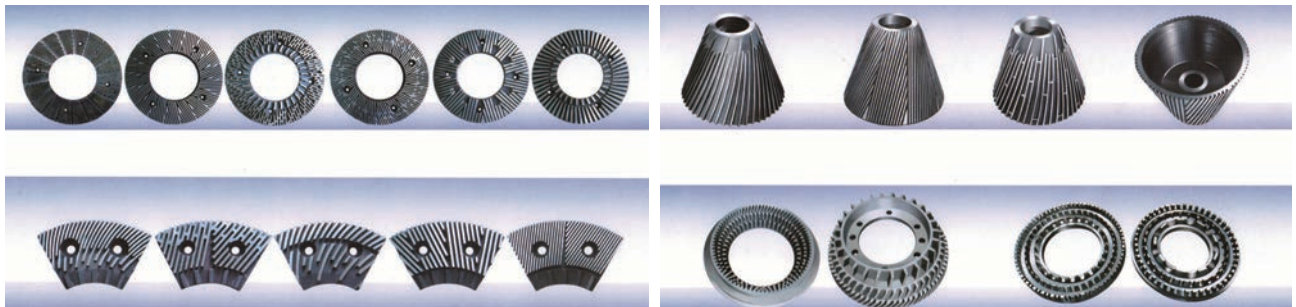
Main technical data:

Model	DD-450	DD-500	DD-550	DD-600	DD-660	DD-720	DD-900	DD-1100
Diameter of plate (mm)	Φ450	Φ500	Φ550	Φ600	Φ660	Φ720	Φ900	Φ1100
Capacity (t/d)	8-80	10-100	10-120	12-150	15-200	15-250	20-400	40-800
Power (kw)	90-160	132-200	160-250	185-315	220-500	250-800	315-1000	400-1800
Consistency (%)	3-5							

The capacity may be different according to different pulp variety and concentration.

So the capacity in the above chart is only used for choosing the model.

Various kinds of disc plate, rotor and stator for refiner



15. Deflaker

There are two kinds:

toothed deflaker, stepped deflaker.

It is used for fiberizing pulp board, waste paper pulp, etc.



Stepped deflaker

Model	AMC450	AMC475	AMC500	AMC525
Diameter of rotor (mm)	Φ450	Φ475	Φ500	Φ525
Capacity (t/d)	35-180	45-210	52-260	60-310
Power (kw)	160	200	250	315
Consistency (%)	3-5			

The capacity may be different according to different pulp variety and concentration.

So the capacity in the above chart is only used for choosing the model.

PULP&PAPER MAKING GENERAL PARTS

A. Raw material conveying equipment

1. Chain conveyer

Purpose:

It is specialized for conveying bundled waste paper, loose waste paper and pulp board

Design features:

- Stamped heavy slab with high strength and impact resistance
- Drivers are directly connected with main spindle gear reducer coupling, which makes the force of the whole machine more scientific.
- Chains are composed of heavy chains, heavy rollers, axis pin that can oil, heavy loading and high abrasion proof bush
- Run on a pathway, steady and low friction, low consumption
- Large conveying capability, operate steadily, low noise, easy to maintain.
- Conveying length and height can be different according to customer's requirements.



2.Pulp pump/ Stock pump



Purpose:

It is used for transporting pulp, sugar, starch and chemical material.

Design features:

- Adopt the technology of ANDRITZ.
- High efficiency
- Anti-jammed
- Non-leakage and easy maintenance

Main technical data:

Flow (m ³ /h)	13-2500
Head (m)	7-110
Power (kw)	0.75-280
Rotation speed (r/min)	750-3000
Connection diameter (mm)	Φ80-600
Pulp concentration (%)	≤6
Working pressure (Mpa)	≤1.6

3.Double-suction low pulse pump

Purpose:

It is suitable for the pulp-feed system of high or middle speed.

Design features:

- Adopt the technology of ANDRITZ.
- Big twist vanes and stagger outlet intercalation helps to decrease the flow impulsion and depress the flow pulse efficiently
- Horizontal type, easy to install
- Special seal,
- Non-leakage



Main technical data:

Flow (m ³ /h)	300-2600
Head (m)	9-85
Power (kw)	45-355
Rotation speed (r/min)	980-1480
Connection diameter (mm)	Φ200-350
Pulp concentration (%)	≤1.5
Working pressure (mpa)	≤1.0

4.DTJ Series adjustment safety agitator

Purpose:

It can be used in the pulp pool, pulp tower, mixed pool, dry pool as well as front pulp pool in the paper-make process.

Design features:

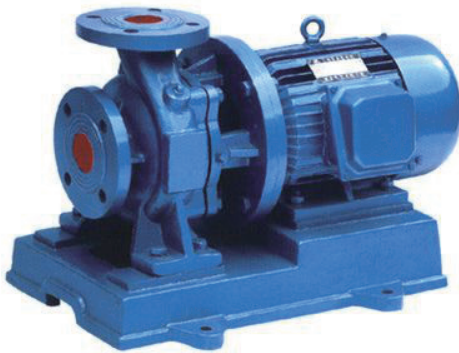
- Adopt the technology of ANDRITZ.
- The vane can be rotating adjusted by bolts.
- The seal adopts rubber ones with mental framework embedded in it.



Main technical data:

When stir within volume of (m ³)	10-1200
Power (kw)	3-75
Rotation speed (r/min)	150-320
Pulp concentration (%)	≤4.5
Impeller diameter (mm)	Φ300-1800

5.Water pump



6.Water ring vacuum pump



PAPER MACHINE

1. Tissue paper machine



Main technical data:

Type of production	Tissue, napkin, hand towel, daily used paper
Type of paper machine	Common speed cylinder mould tissue machine; high speed fourdrinier tissue paper machine; suction former tissue paper machine; crescent form tissue machine
Net paper width (mm)	1575-5600
Paper basic weight(gsm)	12-45
Working speed (m/min)	150-1600
Production capacity (t/d)	3-60

2. Newsprint paper machine



Main technical data:

Type of production	newspaper
Type of paper machine	Fourdrinier wire multi-cylinder paper machine
Net paper width (mm)	2362-3950
Working speed (m/min)	100-800
Production capacity (t/d)	50-220

3. Writing printing paper machine



Type of production	Writing printing paper
Type of paper machine	Fourdrinier multi-cylinder paper machine
Net paper width (mm)	1575-6000
Working speed (m/min)	120-1000
Production capacity (t/d)	50-250

4. Packing paper/ Fluting paper machine



Type of production	Corrugated paper, white board paper, craft board paper, ivory board paper etc
Type of paper machine	Mould machine, fourdrinier machine, overlapped machine
Net paper width (mm)	1575-6000
Working speed (m/min)	80-600
Production capacity (t/d)	100-950

5.Special paper machine

(Filter paper, Tobacco paper, Aramid paper, Floor Wearable paper, Decorative Base Paper)

Type of production	All kinds of special paper
Type of paper machine	Inclined wire special paper machine; Fourdrinier multi-cylinder special paper machine
Net paper width (mm)	1092-2640
Working speed (m/min)	350-400
Production capacity (t/d)	10-80



6.Paper machine upgrade/ modification/ reconstruction project

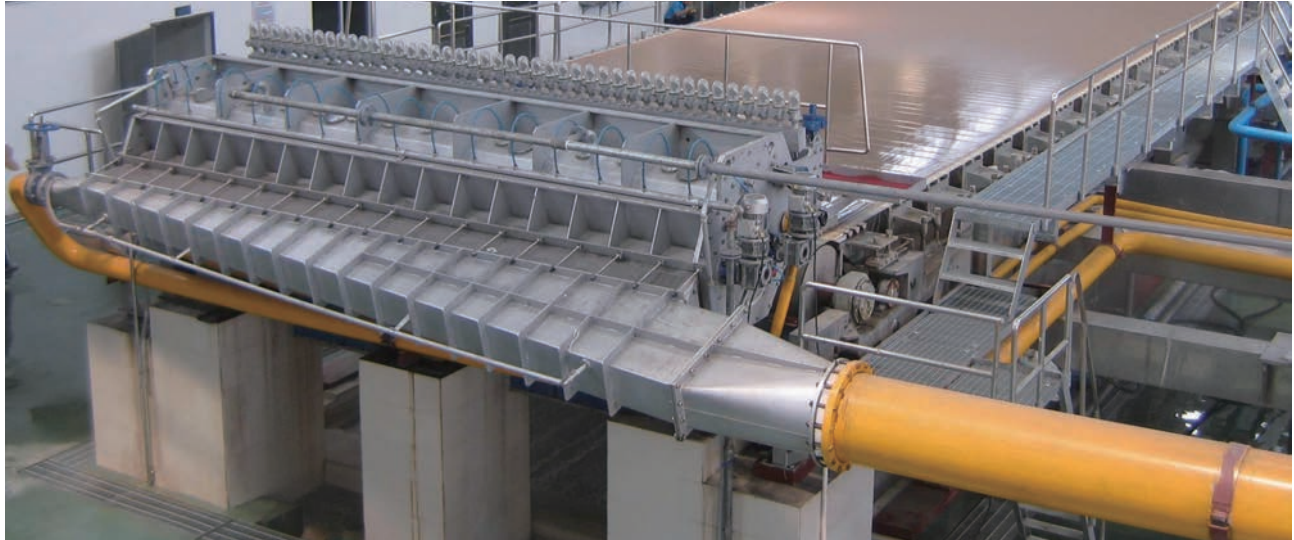
In order to improve the capacity,working speed, paper quality, we can provide the whole set of technical guidance as well as the needed equipment to all kinds of paper machine .

We've done many paper machine upgrade projects successfully.



PAPER MACHINE SPARE PARTS

1. Air-cushion headbox



Headbox is used for sizing in fourdrinier wire section of paper making machine for producing cardboard paper, corrugated base paper, writing and printing paper, offset paper and so on.

The maximum width of the headbox can be 4000mm.

2. Former



Purpose:

It works together with the piece type cylinder mould to produce paperboard of low, medium and high grade.

Design features:

- Square taper multi-barreled pressure pulp distribution
- Diffusion separation chamber for rectification and pulp evenness
- Adjustable mechanism for pulp serving on the wire to control the quality of the wet paper page
- Paper production speed increase by 25%-40%
- Increase the evenness, flatness and quantification of the paper
- Increase the variety and weight range of the paper
- Simplified structure, easy maintenance
- Low energy consumption

Main technical data:

Paper variety	High strength corrugated paper
Quantification (g/m ²)	25-100
Speed (m/min)	80-200
Width(mm)	1092-4200

3.Cylinder mould



Type:

Paper-making cylinder mould, dewatering cylinder mould for thickener

Structure:

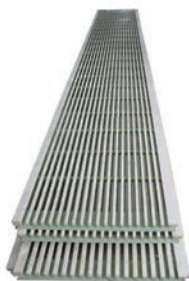
String piece type, circle piece type, gravity type

Main technical data:

Φ1000	Width in 1000-8000mm
Φ1250	
Φ1500	
Φ2000	
Φ2500	dewatering cylinder mould for thickener
Φ3000	

4.Dewatering elements for paper making machine

Various kinds: Forming board box; Dewatering box; Ultra-low vacuum suction box; Low vacuum suction box; Vacuum suction box; Forming machine; Felt suction box; Press shoe



5. Paper making rolls



SECTION	NAME	CHARACTERISTICS
Forming section	Couch roll	Effective dewatering effect, corrosion resistance
	Vacuum couch roll	Φ500mm-Φ1500mm, width 2000mm-8000mm, thickness 30mm-120mm, hole diameter Φ3mm-Φ13mm
	Guide roll	High temperature, corrosion, tension, pressure and impact resistance, easy to scrape.
	Forward roll	Used in the rugged environment of driving unit, good frictional and wear resistance.
Press section	Suction press roll (SS shell)	The rubber layer has good toughness, large tapping area (max: 50%); special designed buffer layer can disperse stress and resist impact; well dewatering effect; high quality paper product; prolong the service time of felt.
	Suction press roll (copper shell)	Stable hole pattern, excellent dewatering effect, stable hardness after long service time, wear resistance and corrosion resistance.
	Soft top press roll	It has superior characteristic of releasing paper; wear, corrosion and impact resistance
	Hard top press roll	It has superior characteristic of releasing paper; stable hardness under high temperature; good bearing capacity under the operation of vapor spray, chemicals, high pressure and scraper operation.
	Grooved roll	Excellent wear resistance, dewatering performance
	Blind press roll	Liner pressure can reach 380KN/m; the surface of the coated area has 21%-23% tapping; the speed is about 1000m/min; special bonding system ensures the safe operation under high speed and high linear pressure; good wear resistance, effective dehydration
	Plain press roll	Good wear resistance
	Artificial stone roll	Good paper releasing; wear resistance; scraper can be used; can satisfy severe rugged environment under high linear pressure
	Guide roll	Good paper releasing; wear resistance
	Spreader roll	Good wear resistance and frictional behavior
	Pick up roll	Good paper releasing, anti-adhesive capacity; wear resistance
Drying section	Stone roll	Compression strength: 200mpa; tensile strength: 70mpa; modulus of elasticity: $0.4 \times 10^6 E$; rigidity: HV3500
	Guide roll	Super wear and high temperature resistance; uniform surface
Sizing/ coating section	Stretch roll	Super wear and high temperature resistance; good after-hardening resistance
	Coating roll	Super wear resistance; good reinstatement and tread forming resistance; uniform surface; good wettability; high temperature and corrosion resistance; longer operational period; reduce downtime
Calender section	Sizing roll	High temperature, wear, corrosion, thread forming resistance; good reinstatement; uniform and stable size; longer run operational period.
	Calender roll	Keep with safe performance although in severe rugged environment of high speed, high temperature, and high linear pressure. At the same time, roller surface lasts stability, good abrasion resistance, and a long grinding cycle.
Reeling end	Spool	Good wear and tear resistance

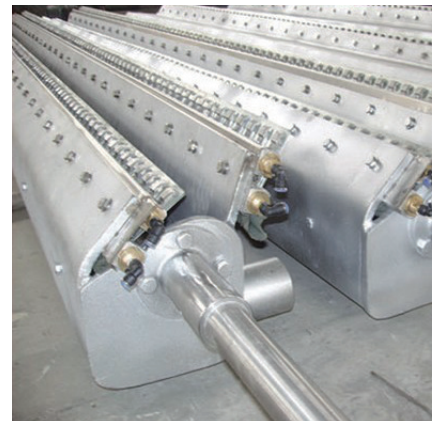
6. Dryer cylinder and accessories

Product inspection standards:

- Drying cylinder design standards can achieve the American national standards (ANSI), European standards (EN), Germany standard (DIN), France standard (NF), Britain standard (BS), Japan industrial standard (JIS), Russia standard (POCT), China national standard (GB) and some other countries' standards.
- Drying cylinder manufacturing, testing and acceptance standards: European «PED 97/23 CE of European Union pressure equipment standard» and (ASTM) standards and some other related standards.
- Drying cylinder supervision and inspection departments and standards: supervised and inspected by a third party of other international SGS recognized authorities according to the standard stipulated in the contract.

Main technical data:

Diameter (mm)	Design pressure (mpa)	Material	Hardness (hb)	Width (mm)	Thickness (mm)	Surface finish	Working speed (m/min)
<Φ1500	0.3-0.5	HT200-250	190-240	1350-10000	18-27	0.2-0.4	200-1300
Φ1500	0.3-0.8	HT250-300		1350-10000	25-32		
Φ1800	0.3-0.8	HT250-300		1350-10000	28-36		
Φ2000	0.3-0.8	HT250-300		1350-8000	30-40		
Φ2500	0.3-0.8	HT250-300		1350-8000	32-47		
Φ3000	0.3-0.8	HT250-300		1350-8000	37-56		
Φ3660	0.3-0.8	HT250-300		1350-6000	40-65		
Φ3680	0.3-0.8	HT250-300		1350-5000	Negotiation		

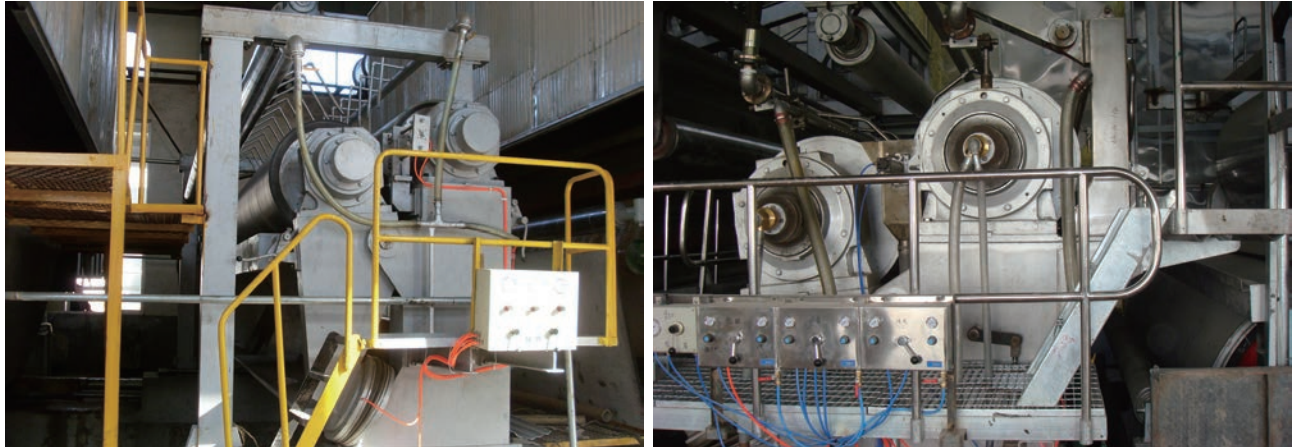


7. Size press

Purpose:

It is used for surface sizing of cardboard paper, corrugated base paper, writing and printing paper, offset paper and so on.

The maximum width of the sizing machine can be 4000mm.



8. Other accessories for paper-making machine

Doctor: doctor blade, doctor holder



Cutter knives



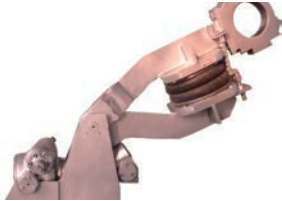
Guider/ Corrector



Air bellow/ Air spring



Stretcher



Shower for felt and wire



Test equipment



Rope carrier system



Pulp consistency sensor



The paper quantitatively stabilization system



Pulp quantitative distribution system



Shower nozzle



Carrier rope



8. Paper making cloth, felt

Paper making felt, includes press felt, pick up felt, dryer felt

Single layer BOM paper making felt series

Single Layer BOM Felt	Single Layer Forming BOM Felt
	Single Layer Press BOM Felt
	Single Layer Top BOM Felt
	1.5 Layer BOM Pulp (Paper) Felt

Double layers BOM paper making felt series

Double Layer BOM Felt	1+1 Composite Layer BOM Felt	Double Layer Forming BOM Felt
		Double Layer Press BOM Felt
	Double Layer Of MD Yarn BOM Felt	Double Layer BOM Special Composite Press Felt
		Double Layer Top BOM Felt

Triple layers BOM paper making felt series

Triple Layer BOM Felt	1+2 Layer BOM Felt	Tri-layer BOM For Large Roll Press
	2+1 Layer BOM Felt	Tri-layer BOM For Shoe Press
	1+1+1 Layer BOM Felt	Tri-layer BOM For Hot Press

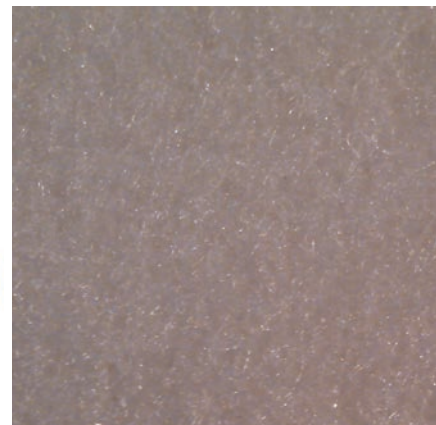
Chemical process paper making felt series

Non-marking paper making felt series

100% Synthetic BOB paper making felt series

Pulp board felt series

Dryer felt series



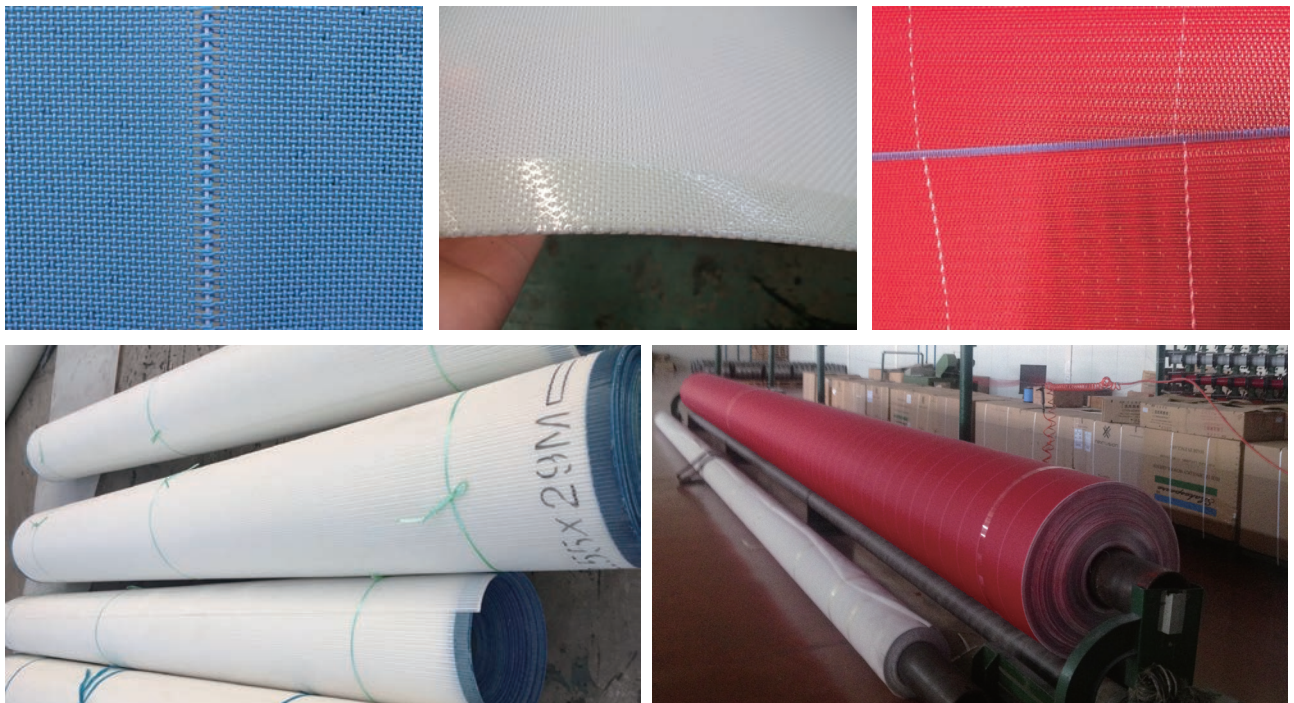
9. Forming fabric, dryer screen, metallic wire, pulp fabric

Polyester forming fabrics: single layer fabrics (4-shed, 5-shed, 8-shed), one and a half layer fabrics(10-shed), double layers (7-shed, 8-shed), two and a half layer forming fabrics, triple layers

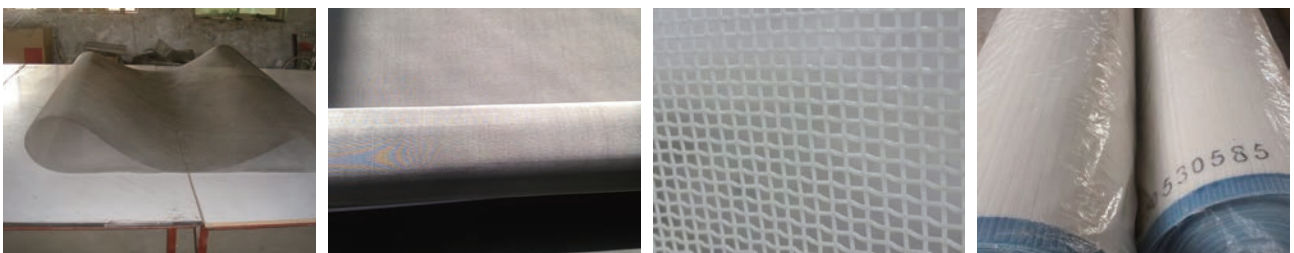
Forming fabrics.



Dryer screen



Metallic wire/Pulp fabric



FINISHED PAPER CONVERTING&PROCESSING MACHINE

1.Soft /hard calendar

Design features:

- Opening type machine rack helps to flexibly choose layout plan for calendar area
- All kinds of test and control system are used to protect soft roller surface
- Paper has good printability and luster
- Paper lateral uniformity and strength are improved
- Optimized size to reduce restriction of paper width and working speed



Main technical data:

Applicable paper type	Coated white paperboard/ ivory board/ Taxus base paper/ Decorative base paper/ newsprint paper/ cultural paper/ cast coated paper/ Carbonless copy paper
Width (mm)	1000-10000
Working speed (m/min)	100-1000
linear pressure (KN/m)	50-220

2.Pope reel

Type	Horizontal pope reel with primary and secondary arms
Width of paper	1600-4800 mm
Max. diameter of reel	Φ2800 mm
Highest operating speed	600 m/min
Reel drum size	Φ 1100mm / Φ 1250mm casting iron cyliner
Reel drum balancing grade	G2.5
Reel spool balancing grade	G1.6

Main parts: Reel drum; reel spool; carrying roll; curved roll; doctor; frame; automatic supply device of reel spool; brake; primary arm; reel-changing device; reel magazine stand; lubrication; Hydraulic station



3.Rewinder

(1)Frame type up-feeding rewinder

Main technical data:

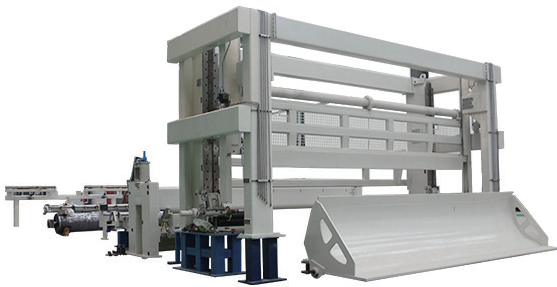
Model (mm)	10 92	15 75	17 60	18 80	21 00	24 00	26 40	28 50	32 00	34 00	36 00	38 00	40 00	42 00	44 00	46 00	48 00	50 00	52 00	54 00	56 00
Gauge (mm)	20 00	24 00	26 00	27 00	30 00	32 00	35 00	37 00	41 00	43 00	45 00	47 00	52 80	54 80	56 80	58 80	60 80	62 80	64 80	66 80	68 80
Working speed (m/min)	600																				
Max base paper diameter (mm)	1200-2200																				
Max finished product diameter (mm)	1000-1500																				
Driving Method	electromagnetic variable-speed motor driving/ variable frequency variable-speed motor driving																				
braking method	DC motor braking/ Variable frequency motor braking																				



(2)High speed bottom-feeding rewinder

Main technical data:

Model (mm)	24 00	26 40	28 50	32 00	34 00	36 00	38 00	40 00	42 00	44 00	46 00	48 00	50 00	52 00	54 00	56 00	58 00	60 00
Gauge (mm)	35 00	37 50	39 50	43 50	45 50	47 55	49 55	51 55	53 55	55 50	57 50	59 50	61 50	63 50	65 50	67 50	69 50	71 50
Working speed (m/min)	800-2000																	
Max base paper diameter (mm)	1600-3000																	
Max finished product diameter (mm)	1000-2000																	
Driving Method	DC variable-speed motor driving/ variable frequency variable-speed motor driving																	
braking method	DC motor braking/ Variable frequency motor braking																	



4.High speed sheet cutter

High Precision Single Rotary Sheet Cutter

Our high precision high speed cutter widely apply to cut paper ,board,artpaper,kraft paper etc in the paper converting,packing and printing industry.



Main technical data:

Cutting type	Top blade rotary,Bottom blade fixed
Reference weight of cutting-paper	60-550GSM
Cutting accuracy	±0.5mm
Max .speed of cutting	300sheets/min
Max.cutting speed	300m/min
Cutting length range	450-1650mm
Max.scroll diameter	Max 1800mm(71")
Paper-piling height	1300mm
Max.paper-cutting width	1400mm
Weight	12000kg

5.Gray paperboard/white paperboard coating machine



6.Carbonless copy paper coating machine



7.Thermal paper coating machine



8.Coated art paper coating machine

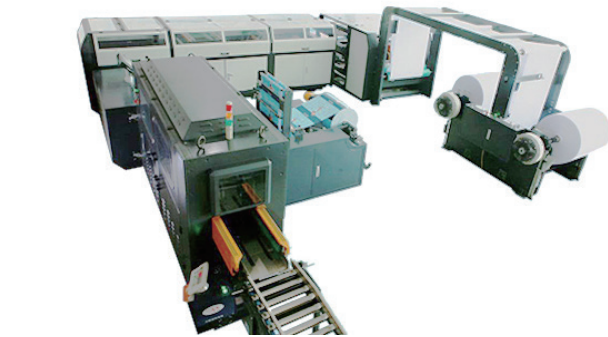
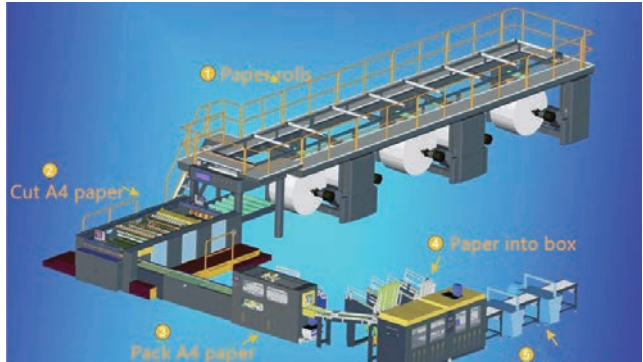


9.A4 cutting and packaging production lines

A4/4-5 Copy Paper Slitter, A4 Copy Paper Production Line

A4 copy paper sheeting and wrapping machine. A4-2/4/5 A4 copy paper sheeting and wrapping machine. This production line adopts the most advanced twin Rotary knife synchronize sheeting, ream wrapping and box wrapping fully automatic.

Cutting type	A4-2/A4B	A4-4/A4B	A4-5/A4B
Paper width	845-850mm	845-850mm	1055-1060mm
Production speed	Max.300m/min	Max.250m/min	Max250m/min
Cutting accuracy	±0.2mm	±0.2mm	±0.2mm
Paper rolls number	2rolls	4or5 rolls	4 or 5 rolls
Cutting numbers	2 cuttings	4cuttings	5cuttings
Output of the ream	Max 12 reams/min	Max 33 reams/min	Max 42 reams/min
Power	23kw+18kw	32kw+18kw	32kw+18kw
Dimension(L*W*H)	9383*6875*6733mm	20000*13350*3200mm	20000*13350*3200mm



10.Paper counting machine/ Paper sheet counter

The main parameters and performance:

Overall dimensions	500x500x1400mm
Working voltage	220VAC
Power consumption	300W
The vacuum of running	50-60bar
Running speed of machine	800-2000pcs/min
Paper specifications	22-255gsm
Size of the paper	700x967, 900x1127, 900x1367
Size of label paper	5.5mm (width), 0.25mm (thickness), dia 75x155mm
Interval of tag inset	2-9999pcs
The environment temperature	5-40℃

Features:

This machine uses PLC control, the machine runs stably and counts accurately. The parameter setting and the function display are all on the touch screen, and the operation is simple, convenient and visual.

- Alarm real-time monitoring, and will be displayed on the touch screen at the same time, the operation is clear.
- English & Chinese bilingual, can be converted, suitable for foreign customers.
- Quick counting speed, speed 800-2200p/min can be arbitrarily set, and real-time display counting speed
- Label tape is more convenient and quick to install
- Compact shape, size 500*500*1400mm.





- **BEST QUALTY**
- **PROFESSIONAL SERVICE**
- **KEEP COMMITMENT**
- **Zhengzhou Sinodu Machinery Technology Co Ltd IS ALWAYS
HERE WITH YOU**

Address: Room 2211,
Tower A, Asia Pacific Times
Plaza, Economic
Development Zone,
Zhengzhou - China